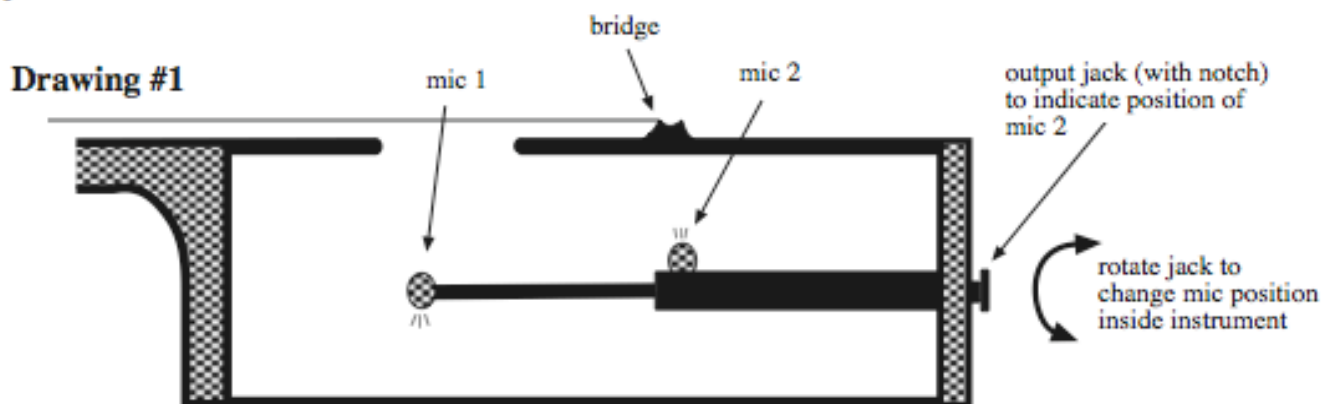


## Mounting Instructions - MiniFlex Model 12 2Mic for soprano & concert Ukulele Model 12a (longer) is for baritone ukulele or oval hole mandolin

**Drawing #1:** Model 12 has two microphones:

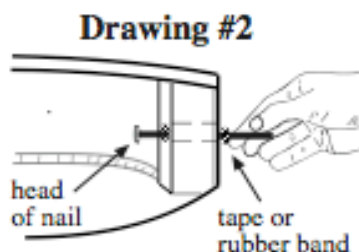
Mic #1 is mounted on the end of the gooseneck and will be positioned near the Soundhole. A white dot on the windscreen ( active face of the mic) should face across the soundhole or towards the interior of the instrument. Do not point the white dot facing out of the soundhole. The gooseneck may be bent if too long to place the mic in the center of the Soundhole.

Mic #2 is mounted on the end of the barrel attached to the output jack, and will be positioned approximately underneath the bridge. The output jack may be rotated to change the position of Mic #2. There is a small mark (notch) on the outside threaded end of the output jack to indicate the position of how mic # 2 points towards the underside of the bridge. If there is any problem with tone quality, rotate the jack to change the position of mic #2, and then possibly make adjustments to mic # 1 .



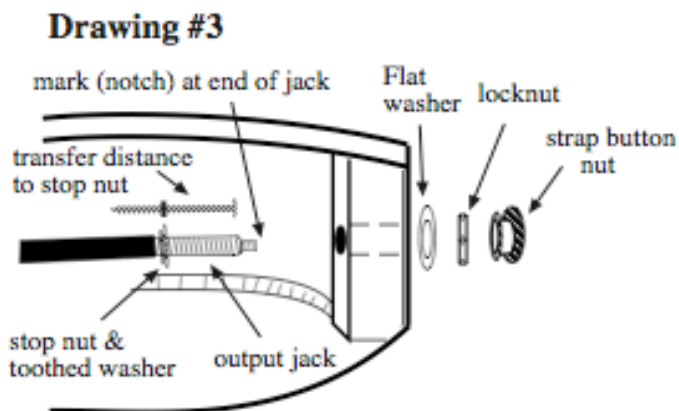
### INSTALLATION - Measure the tailblock thickness

Drawing #2 - shows a nail with the head being drawn against the inside edge of the tailblock and a rubber band marking the outside edge of the instrument.

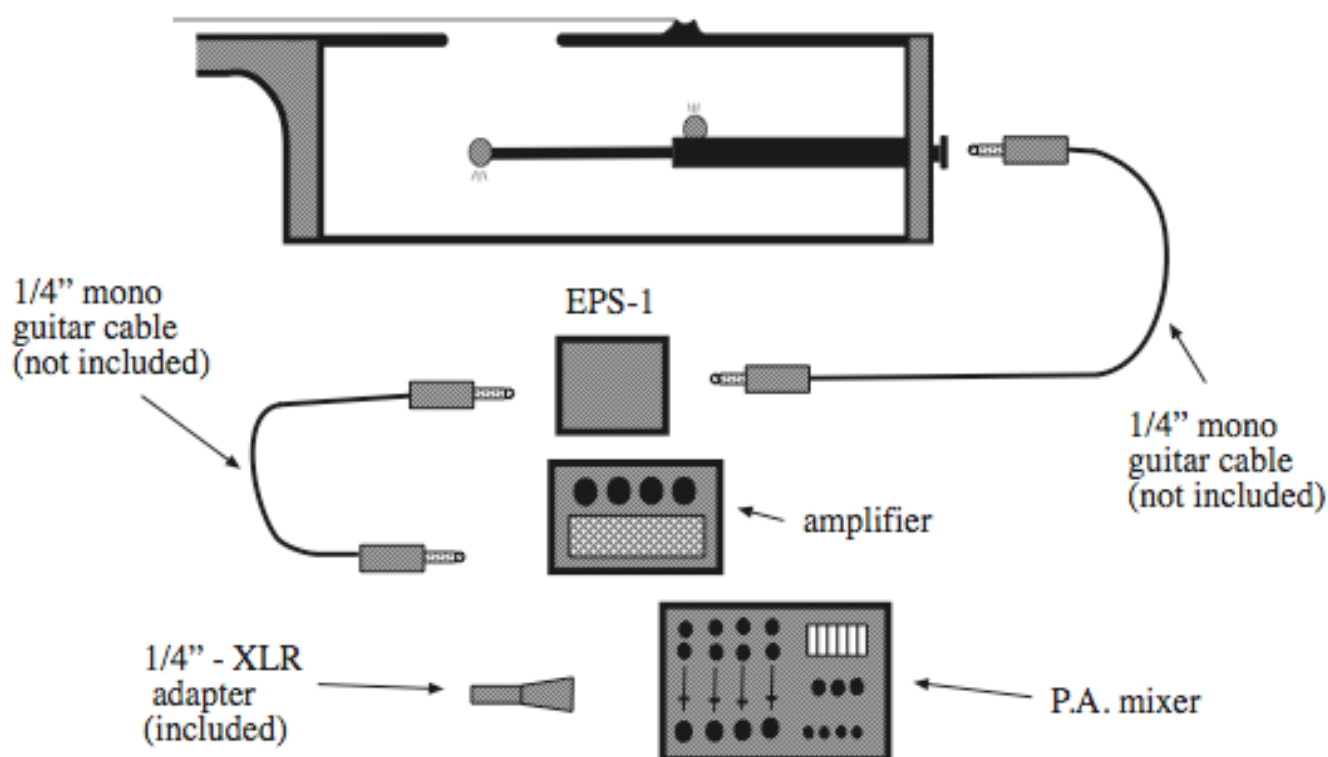


**Stop nut adjustment** Drawing #3 Using the nail with the rubber band, adjust the stop nut (with toothed washer attached) on the barrel of the jack to match the thickness of the tailblock so:

- the 2mic assembly will be securely mounted to the instrument, and
- the end of the jack will pass completely through the strap nut so a 1/4" phone plug can fully engage the jack.



**Connecting to an amplifier or P.A. system** - Two 1/4" mono guitar cables (not included) are required for the Model 12 2Mic. One 1/4" mono cable connects the output jack to the input of the EPS-1 power supply. The second 1/4" mono cable connects the output of the EPS-1 to an amplifier or P.A. mixer. The 1/4"-XLR adapter may be attached to this second cable to connect with an XLR input.



### Additional information:

- **batteries:** Model 12 is powered by one AA battery located inside the EPS-1 that should be changed every year. The output jack of the EPS-1 acts as a switch to turn the battery "on" when a plug is inserted.
- **P.A. systems:** A high quality P.A. system will provide the best possible sound quality and feedback control. For most P.A. systems, use the "line input" with a standard 1/4" mono guitar cable. Or use the 1/4"-XLR adapter into the mic input or snake.
- **1/4" - XLR adapter:** This adapter (included) permits plugging your 2Mic to low impedance XLR inputs, which may improve performance through some amplifiers, and P.A. systems, especially when using a snake
- **EQ & Effects devices:** Model 12 is compatible with many AC or battery operated guitar effects devices. Adding EQ capacity (graphic or parametric) is always helpful.
- **Direct boxes:** will help when plugging into a P.A. snake, and replace the 1/4"-XLR adapter
- **Guitar, bass & keyboard amps:** Model 12 will work with most combo amplifiers, but the sound quality & feedback control will not be as good compared to using a P.A. system or high quality acoustic amp.
- **Feedback:** The Model 12 2Mic will deliver more volume before feedback than any single mic system. But, feedback can sometimes occur when the 2Mic is used in small rooms, through electric guitar & bass amps, or when played at extremely high volumes (rock band sound levels). All microphones, including the 2Mic need lots of air, a high quality P.A. system, and a good room to perform best.